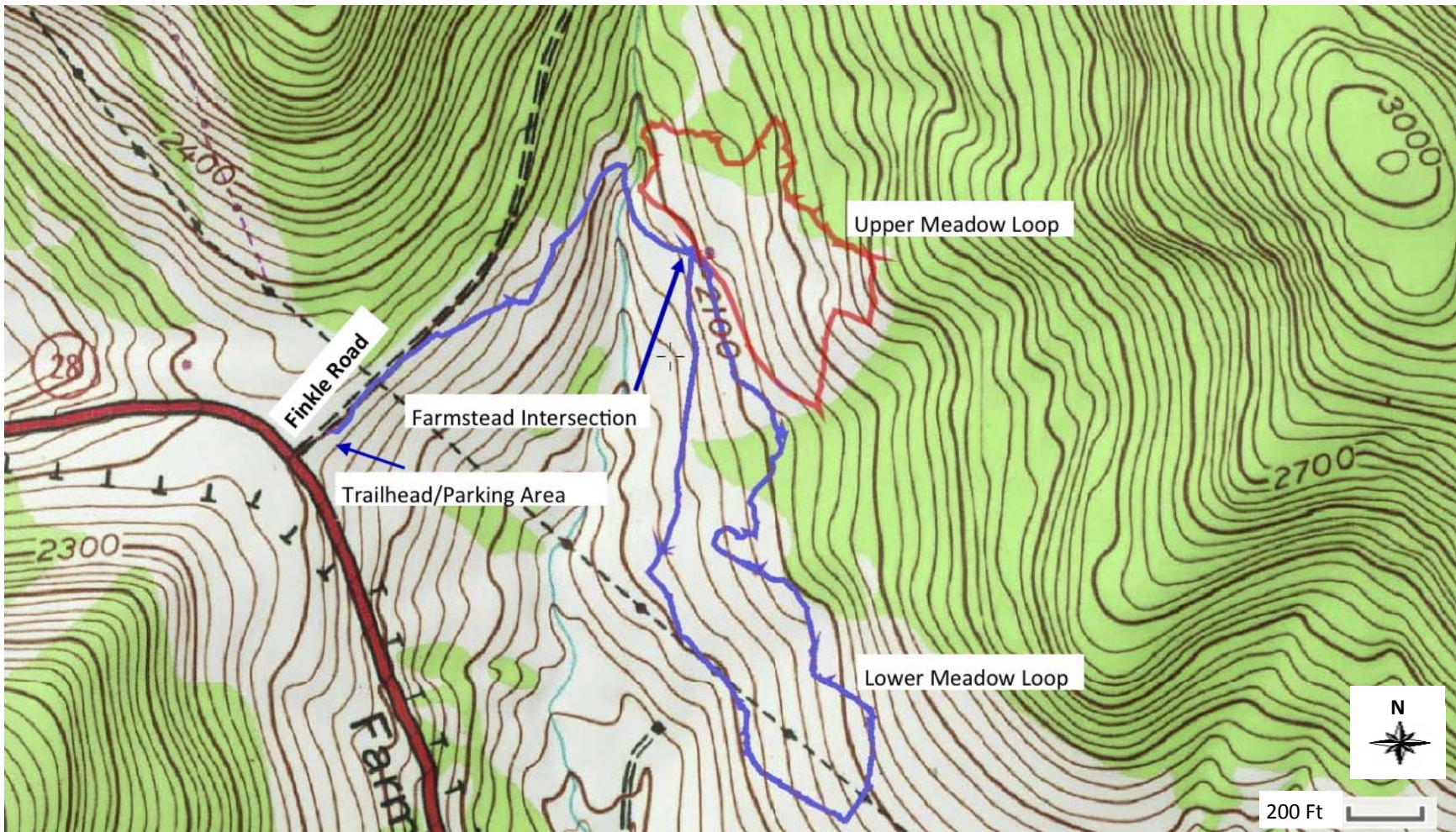


Palmer Hill Trail



The Palmer Hill Trail consists of three segments - a 0.6 mile route to the farmstead intersection and then a relatively easy 1.5 mile Lower Meadow Loop and a more strenuous 1 mile Upper Meadow Loop. This allows hikers the options of short and easy hikes or moderately strenuous and longer hikes. Each takes you through forest and beautiful wildflower meadows that offer wide open views of the surrounding mountains and hills and of the bucolic scenery that Delaware County epitomizes. Along the way are centuries old foundations, old stone walls, a lovely stream and majestic old trees. In season, there will be blackberries and apples for the hungry hiker. Snow shoe or cross country ski in winter.

Trailhead on Finkle Road, just off Route 28 in between Andes and Margaretville.

Trail created by the Catskill Mountain Club in partnership with the NYC Department of Environmental Protection.

To volunteer to help build or maintain trails like this one, or to become a member, go to www.CatskillMountainClub.org.

map software provided by www.MappingSupport.com

